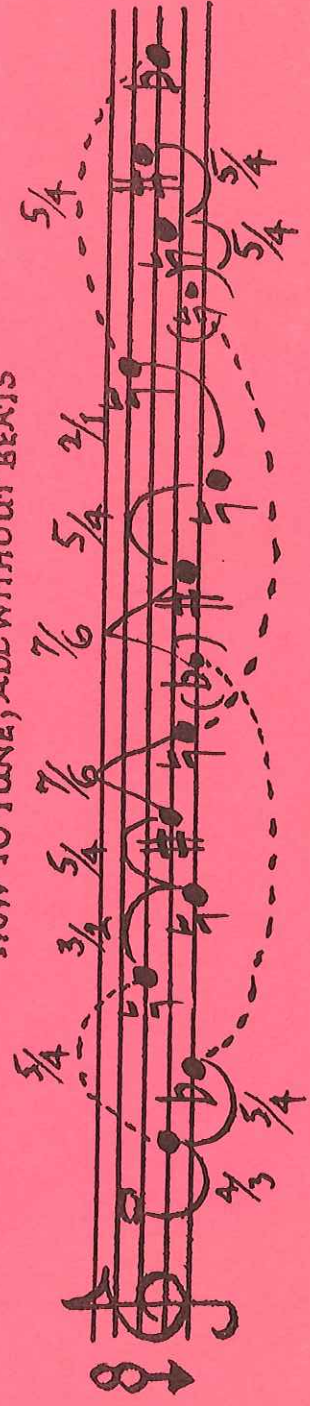
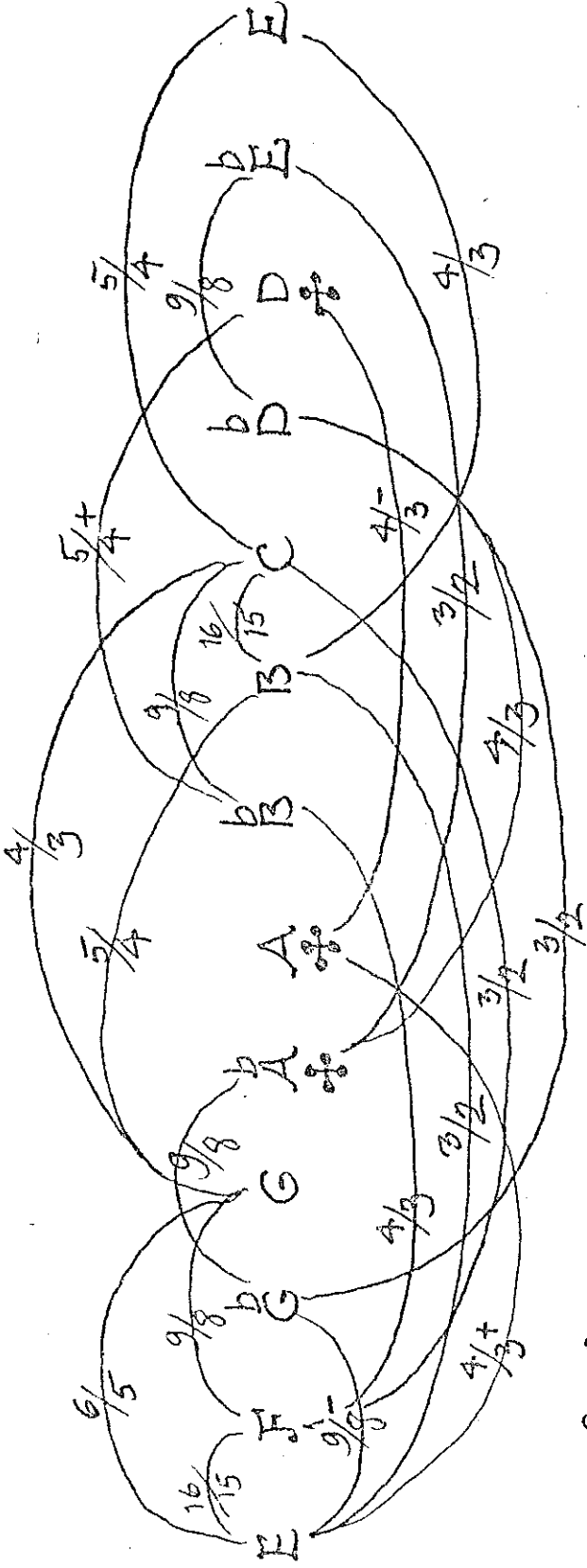


Ludovico Fogliano, Modena, 1529, Just Meantone Tuning

HOW TO TUNE; ALL WITHOUT BEATS





Charles, Third Earl of Stanhope; Well Temperament, 1806 ~~no~~

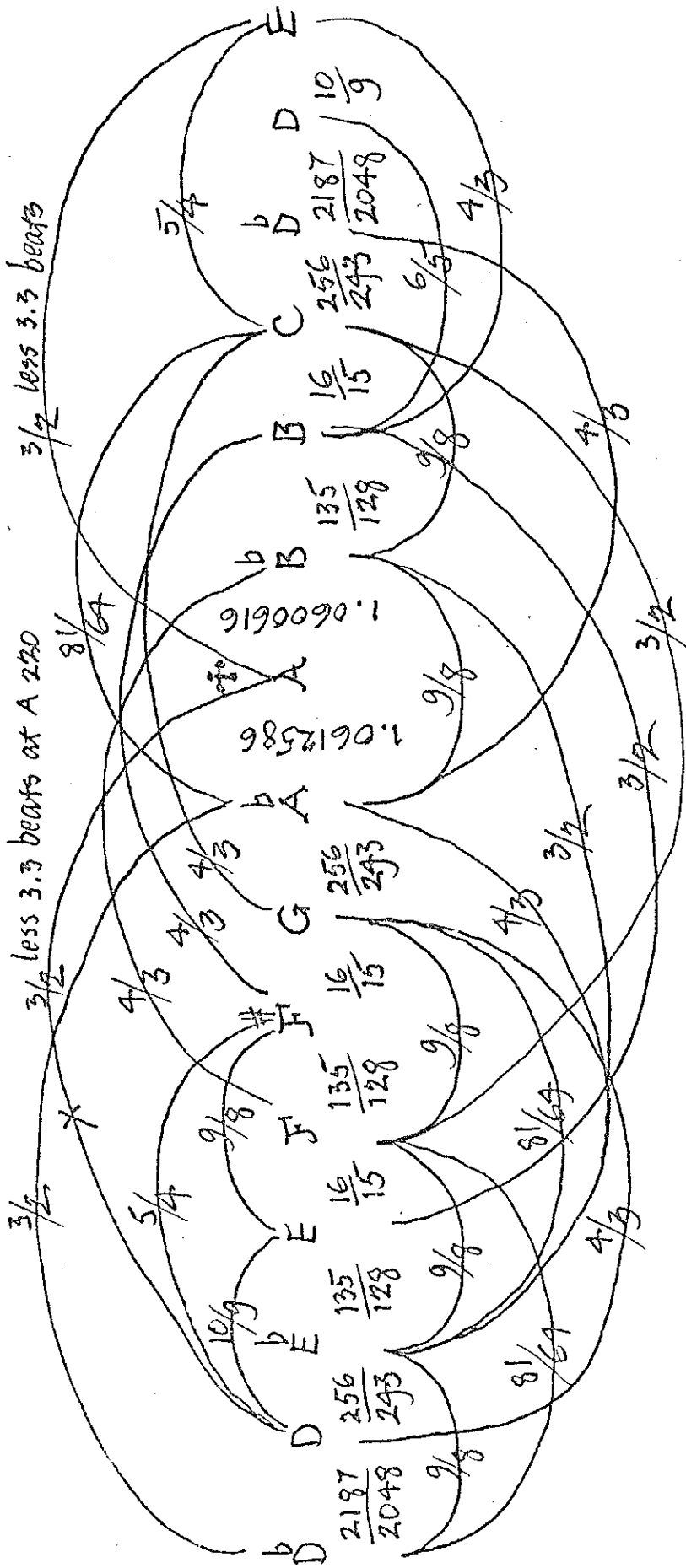


E F G^b

For a Meter Monochord: 1000/937.5/889.2/833.3/790.4/746.6/703.1/666.7/625/592.8/558A/526.9/500

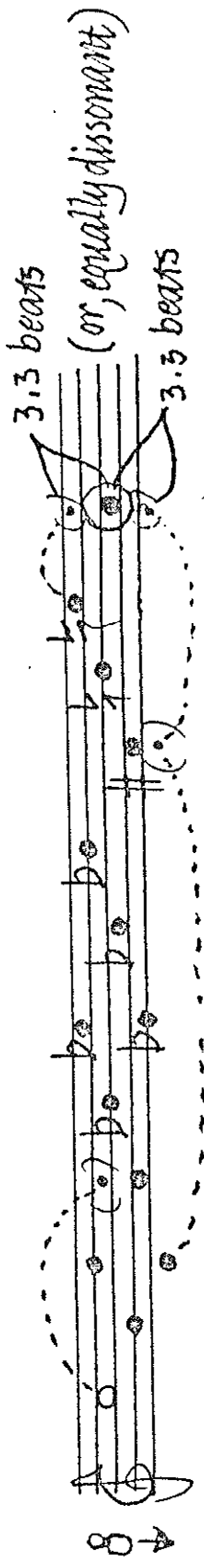
HOW TO TUNE: ALL WITHOUT BEATS EXCEPT IN TUNING bA , $\sharp D$, $8-\frac{1}{4}A$

A musical staff with notes and accidentals. Brackets and arrows indicate 'Bi-equal' and 'Tri-equal' tuning relationships between specific notes.



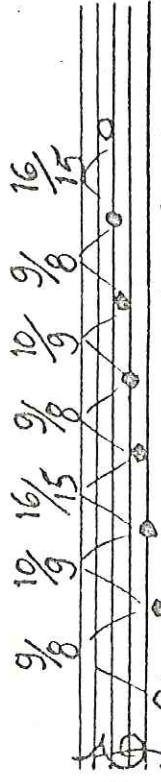
Johann Philipp Kirnberger, 1779, $\frac{1}{2}$ syntonic comma Well Temperament

HOW TO TUNE

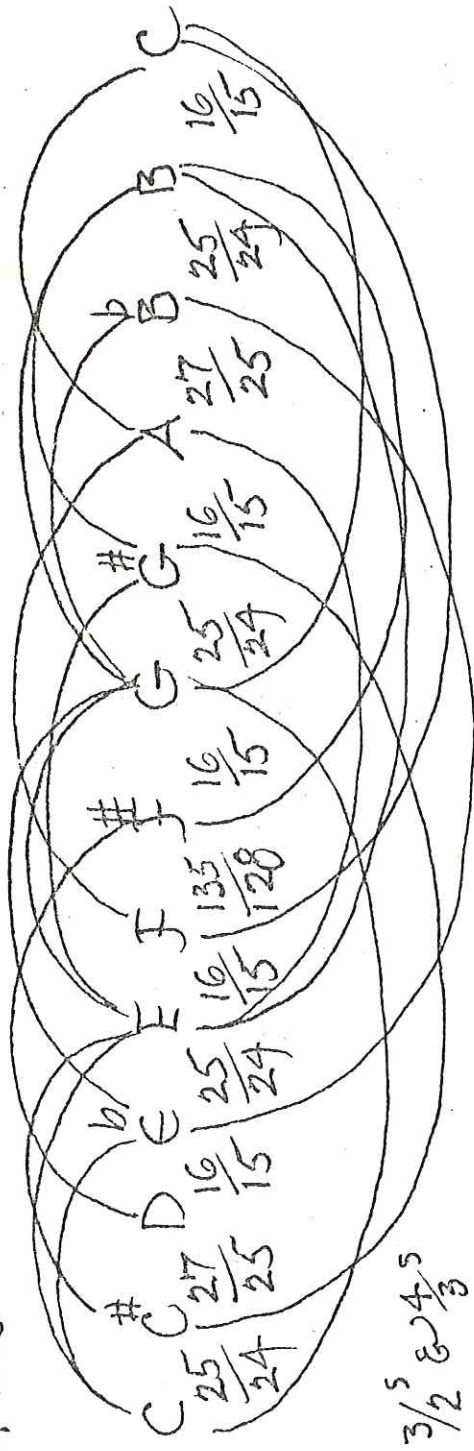


(all without beats save last tone)

FOR A METER STRING: $1000/949/900/843.75/800/750/711.91/670.82/632.81/600/562.5/533.94/500$

The basis:  = Synteron Diatonic

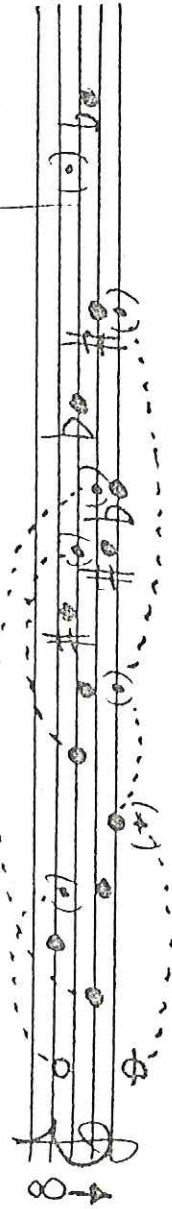
$\frac{5}{4}$ & $\frac{6}{5}$



Friedrich Wilhelm Marburg, 1776, just intonation, the "Common Model"

HOW TO TUNE; ALL WITHOUT BEATS

N.B. Tuning A instead of # gives this intonation a wider usage, & a good C min. mode too



TO A METER STRING: $1000/960/888.09/833.33/800/750/711.11/666.67/640/600/555.55/533.33/500$